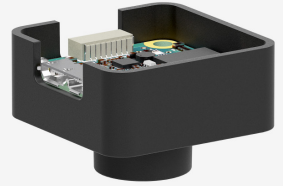
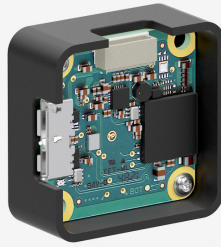


**In series**

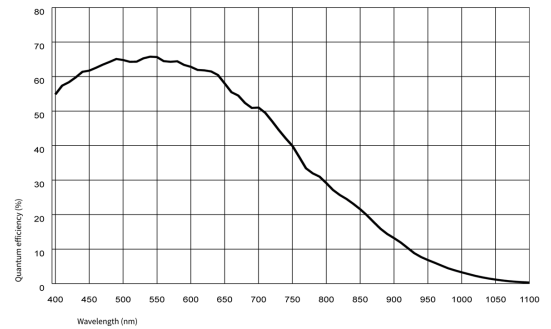
The model is in series and available for the long term.



## Specification

### Sensor

Sensor type	CMOS Mono
Shutter	Global Shutter
Sensor characteristic	Linear
Readout mode	Progressive scan
Pixel Class	2 MP
Resolution	2.30 Mpix
Resolution (h x v)	1920 x 1200 Pixel
Aspect ratio	16:10
ADC	10 bit
Color depth (camera)	10 bit
Optical sensor class	1/3"
Optical Size	5.760 mm x 3.600 mm)
Optical sensor diagonal	6.79 mm (1/2.36")
Pixel size	3 μm
Manufacturer	Onsemi
Sensor Model	AR0234CS-MONO
Gain (master/RGB)	16x/-
AOI horizontal	same frame rate
AOI vertical	increased frame rate
AOI image width / step width	48 / 12
AOI image height / step width	4 / 2
AOI position grid (horizontal/vertical)	4 / 2
Binning horizontal	same frame rate
Binning vertical	increased frame rate
Binning method	-
Binning factor	2
Subsampling horizontal	same frame rate
Subsampling vertical	increased frame rate
Subsampling method	M/C automatic
Subsampling factor	2, 4



Subject to technical modifications (2023-05-17)

## Model

Frame rate freerun mode	102 fps
Frame rate trigger (continuous)	72 fps
Frame rate trigger (maximum)	72 fps
Exposure time (minimum - maximum)	0.012 ms - 2000 ms
Power consumption	0.5 W - 1 W

## Ambient conditions

The temperature values given below refer to the outer device temperature of the camera housing. For PCB versions, refer to the separate hints in the respective documentation.

Device temperature during operation	0 °C - 55 °C / 32 °F - 131 °F
Device temperature during storage	-20 °C - 80 °C / -4 °F - 176 °F
Humidity (relative, non-condensing)	20 % - 80 %

## Connectors

Interface connector	USB 3.0 micro-B
I/O connector	8-pin connector
Power supply	USB cable

## Pin assignment I/O connector

1	Voltage output 3.3 V
2	Ground (GND)
3	Flash output without optocoupler
4	Trigger input without optocoupler
5	General Purpose I/O (GPIO) 1
6	General Purpose I/O (GPIO) 2
7	Ground (GND)
8	USB Power: 5 V, max. 400 mA



## Design

Lens Mount	S-Mount
IP code	-
Dimensions H/W/L	32.5 mm x 32.5 mm x 14.0 mm
Mass	13 g

## Features

Image Acquisition	Freerun	✓
	Software trigger	✓
	Hardware trigger	✓
	Trigger controlled exposure	-
	Denoisier	-
	Long exposure	-
	Line scan	-
	Line scan highspeed	-
Flashing	Flashing	-
	PWM flashing	-

Image Adjustments

Auto exposure	-
Auto gain	-
Auto whitebalance	-
Color correction	-
Gamma	-
LUT	-
Mirror/flip	X/Y

On-board Image Processing

Pixel formats	Mono8 Mono10g40IDS
Region of interest	✓
Decimation (FPGA)	-
Decimation (Sensor)	(2,4)x(2,4)
Binning (FPGA)	-
Binning (Sensor)	2x2 Increases frame rate.

Others

Chunks	-
Sequencer	-
Events	✓
Firmware update	✓
1st supported firmware version	3.2.19300