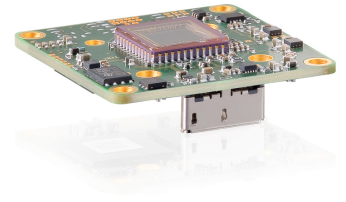
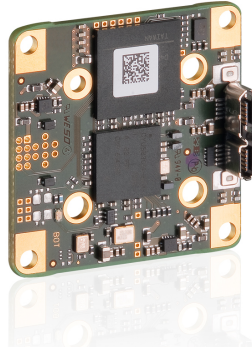
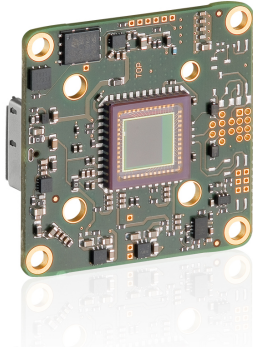


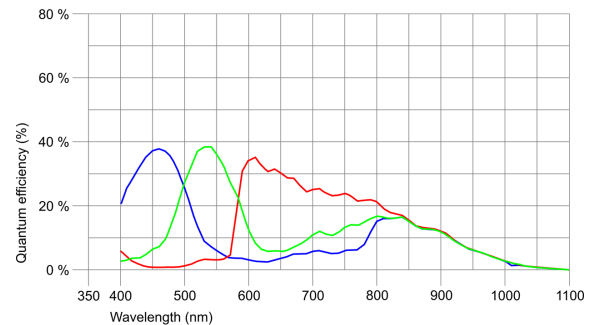
UI-3252LE-C (AB00438)



Specification

Sensor

| | |
|---|---|
| Sensor type | CMOS Color |
| Shutter | Global Shutter / Rolling shutter / Global Start Shutter |
| Sensor characteristic | Linear |
| Readout mode | Progressive scan |
| Pixel Class | UXGA |
| Resolution | 1.92 Mpix |
| Resolution (h x v) | 1600 x 1200 Pixel |
| Aspect ratio | 4:3 |
| ADC | 10 bit |
| Color depth (camera) | 12 bit |
| Optical sensor class | 1/1.8" |
| Optical Size | 7.200 mm x 5.400 mm |
| Optical sensor diagonal | 9 mm (1/1.78") |
| Pixel size | 4.5 µm |
| Manufacturer | e2v |
| Sensor Model | EV76C570ACT |
| Gain (master/RGB) | 4x/4x |
| AOI horizontal | same frame rate |
| AOI vertical | increased frame rate |
| AOI image width / step width | 16 / 4 |
| AOI image height / step width | 4 / 2 |
| AOI position grid (horizontal/vertical) | 2 / 2 |
| Binning horizontal | same frame rate |
| Binning vertical | same frame rate |
| Binning method | M/C automatic |
| Binning factor | 2 |
| Subsampling horizontal | - |
| Subsampling vertical | - |
| Subsampling method | - |
| Subsampling factor | - |



UI-3252LE-C (AB00438)

Model

| | |
|-----------------------------------|--|
| Pixel clock range | 10 MHz - 128 MHz |
| Frame rate freerun mode | 60 |
| Frame rate trigger (maximum) | 57 |
| Exposure time (minimum - maximum) | 0.020 ms - 10000 ms |
| Long exposure (maximum) | 10000 ms |
| Power consumption | 1.3 W - 1.5 W |
| Special features | IDS line scan mode, Scaler, Sequencer, Log mode, Sensor hot pixel correction, Fine exposure, Multi-AOI |

Ambient conditions

The temperature values given below refer to the outer device temperature of the camera housing.

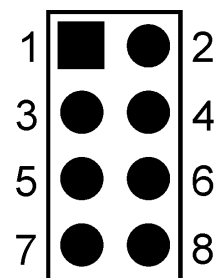
| | |
|-------------------------------------|---------------------------------|
| Device temperature during operation | 0 °C - 55 °C / 32 °F - 131 °F |
| Device temperature during storage | -20 °C - 60 °C / -4 °F - 140 °F |
| Humidity (relative, non-condensing) | 20 % - 80 % |

Connectors

| | |
|---------------------|--|
| Interface connector | USB 3.0 micro-B |
| I/O connector | 8-pin plated-through holes (for connector 50 mil/RM 1,27 mm) |
| Power supply | USB cable |

Pin assignment I/O connector

| | |
|---|---------------------------------------|
| 1 | USB Power supply (VCC) 5 V |
| 2 | USB Ground (GND) |
| 3 | Trigger input without optocoupler (+) |
| 4 | Flash output without optocoupler (+) |
| 5 | General Purpose I/O (GPIO) 1 |
| 6 | General Purpose I/O (GPIO) 2 |
| 7 | I2C bus clock signal |
| 8 | I2C bus data signal |



Camera rear view

Design

| | |
|------------------|----------------------------|
| Lens Mount | - |
| IP code | - |
| Dimensions H/W/L | 36.0 mm x 36.0 mm x 9.8 mm |
| Mass | 8 g |

UI-3252LE-C (AB00438)

