

Go-X Series

Small industrial **area scan cameras** designed for the next generation of vision systems



ATTRACTIVE
PRICE
LEVELS

6
YEAR
WARRANTY

Featuring Sony **Pregius** and **Pregius S** sensors with resolutions from **2.3 to 24.5 megapixels**



Go-X Series - The “no compromises” choice for your next vision system

At last, there’s a series of compact industrial area scan cameras that offer the performance, affordability, and reliability you need to create machine vision systems that stand out in a highly competitive market.

These are cameras that feature the most popular **Sony Pregius** and **Pregius S** CMOS sensors at some of the lowest prices in the industry. Cameras carefully screened to ensure dust-free optical paths on all models. Cameras with a size and weight to fit a wide range of systems and applications. And most importantly, cameras built with industrial grade shock, vibration, and thermal management to virtually eliminate field failures.

The Go-X Series delivers all this and more.

Explore the Go-X Series



Cameras built for non-stop operation – 24/7 without fail.

Go-X Series cameras are built using JAI's proven manufacturing process that has delivered field failure rates of less than two cameras per thousand over the last five years. They're designed to withstand the shock, vibration, and thermal demands of typical industrial environments so they can keep critical inspection systems running – day and night, all year round.

80G

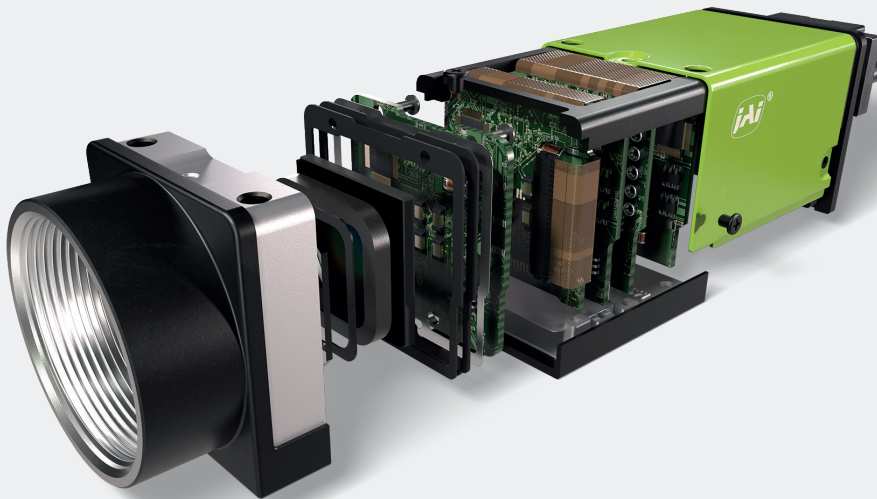
Shock

10G

Vibration

MTBF

>190k hours

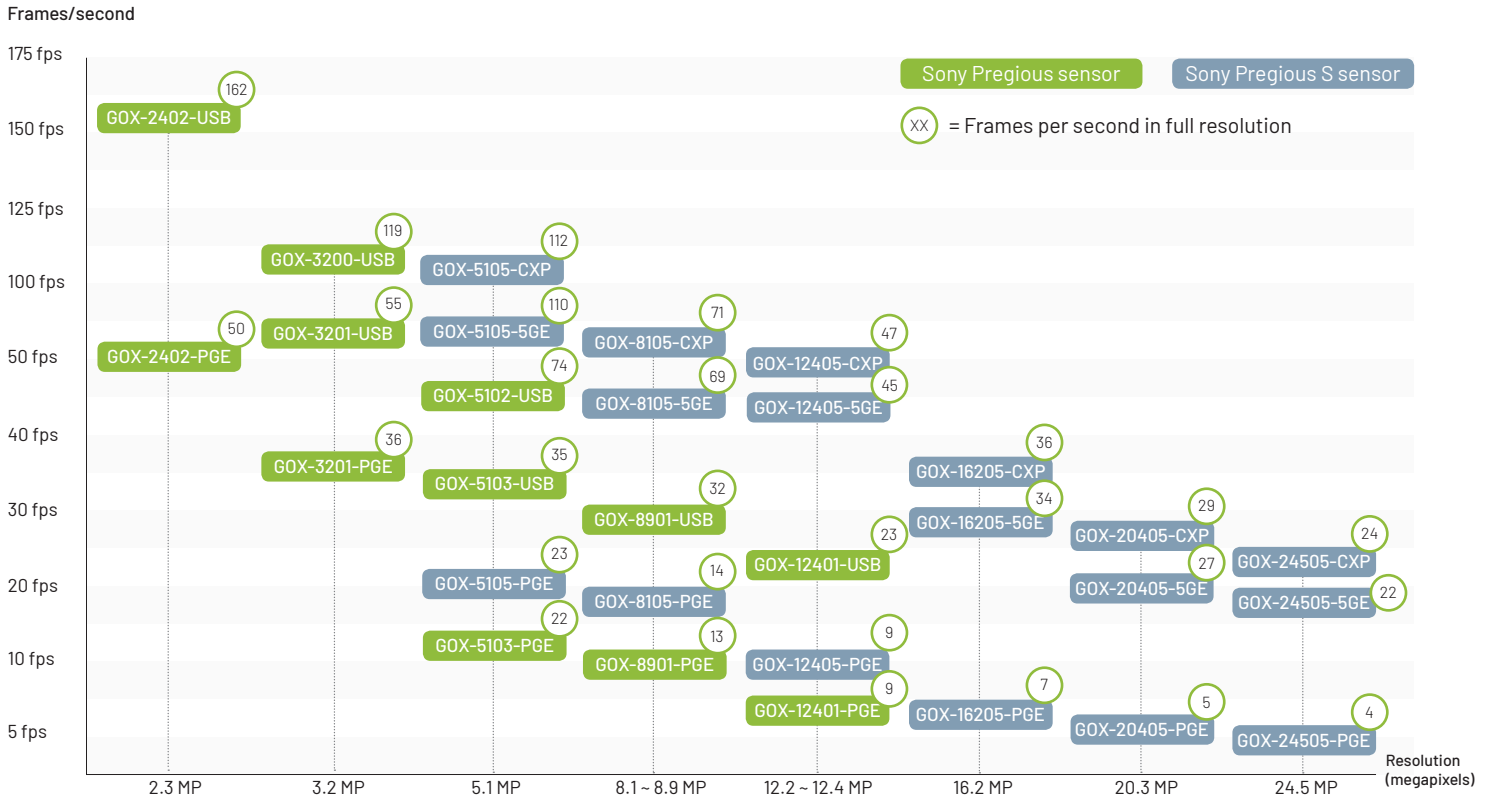


Dust seals on all models for supreme image quality

The Go-X Series applies dust prevention measures to every model, including cleanroom assembly, internal seals around the sensor compartment, and a screening process to ensure every camera shipped delivers the best possible image quality via a clean, dust-free optical path.

High quality CMOS sensors with a choice of resolutions and frame rates.

The Go-X Series features the most popular Sony Pregius and Pregius S CMOS image sensors, including monochrome and Bayer color, with resolutions from 2.3 to 24.5 megapixels and frame rates up to 162 fps, so you can choose the right resolution, performance, and price point for your application.



Camera model suffix: **PGE**: GigE Vision (1000BASE-T). **5GE**: GigE Vision (5BASE-T). **USB**: USB3 Vision. **CXP**: CoaXPress (CXP-6, 1-connector)

Cost-efficient, industry-standard interfaces

Interface options include GigE Vision 1000BASE-T, GigE Vision 5GBASE-T, USB3 Vision and CoaXPress - all with power-over-the-interface capability.



GiGE[®]
VISION
(1000BASE-T)



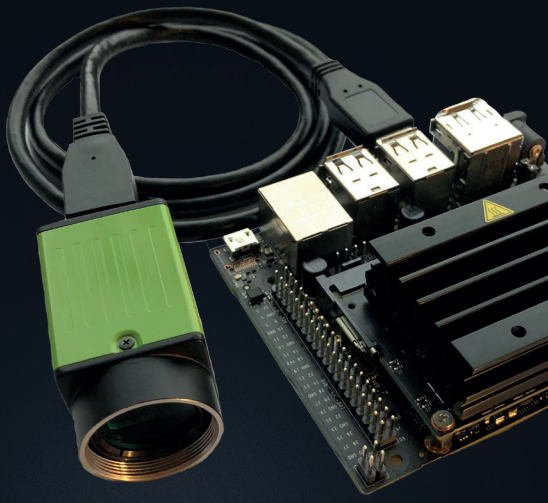
5GiGE[®]
VISION
(5GBASE-T)



USB[®]
VISION
(USB3 Vision)



CoaXPress[®]
(CXP-6, 1-connector)



Software tools for **easy integration**

A free SDK supports* Windows, Linux, and Linux for ARM embedded system development and is compatible with the JAI Developer Suite, a high-level API that streamlines code writing and provides easy integration with the OpenCV computer vision software library.

*) GigE Vision and USB3 Vision models only.



A **size and weight** that fits

With their compact size and weighing less than 70 grams, Go-X Series cameras mount easily on robotic arms, UAVs, and any other machine vision systems where motion or portability are vital. Two sets of mounting holes (21 mm and 20 mm) are designed to fit most existing installations with no re-tooling required.

Features to support **sophisticated vision systems**

Go-X Series cameras provide the features you need for your next generation vision system. Region-of-interest (ROI), image flipping and mirroring, 2x2 binning, blemish compensation and shading correction are all standard. As are advanced features like two different sequencer modes and a user-customizable auto-exposure function (ALC).

Models with Pregius S sensors also feature JAI's "Xscale" function, enabling virtual, sub-pixel rescaling of output for greater binning flexibility or when matching the resolution and FOV of cameras in existing systems.

The industry's longest camera **warranty**

All Go-X Series cameras are backed by a full 6-year warranty, the longest warranty offered by any camera manufacturer.

6
YEARS

Find the right Go-X Series model for your machine vision application

All models have C-mount lens mounts and can be powered over the interface or by an external power supply via the 6-pin Hirose connector.



Models with GigE Vision (1000BASE-T) interface

Available with color or monochrome sensors

Dimensions: 29 mm x 29 mm x 55.0 mm

Model	Front View	Resolution Megapixels (MP) (horizontal x vertical pixels)	Frame rate fps	Sensor format	Cell size (μm)	Data output (Bit)	Sensor name	Interface
GOX-24505-PGE		24.5 MP (5328 x 4608)	4	1.2" CMOS	2.74 x 2.74	8/10/12	IMX540 (Pregius S)	GigE Vision (1000BASE-T)
GOX-20405-PGE		20.3 MP (4512 x 4512)	5	1.1" CMOS	2.74 x 2.74	8/10/12	IMX541 (Pregius S)	GigE Vision (1000BASE-T)
GOX-16205-PGE		16.2 MP (5328 x 3040)	7	1.1" CMOS	2.74 x 2.74	8/10/12	IMX542 (Pregius S)	GigE Vision (1000BASE-T)
GOX-12405-PGE		12.4 MP (4128 x 3008)	9	1/1.1" CMOS	2.74 x 2.74	8/10/12	IMX545 (Pregius S)	GigE Vision (1000BASE-T)
GOX-12401-PGE		12.4 MP (4096 x 3000)	9	1.1" CMOS	3.45 x 3.45	8/10/12	IMX304 (Pregius)	GigE Vision (1000BASE-T)
GOX-8901-PGE		8.9 MP (4096 x 2160)	13	1" CMOS	3.45 x 3.45	8/10/12	IMX267 (Pregius)	GigE Vision (1000BASE-T)
GOX-8105-PGE		8.1 MP (2856 x 2848)	14	2/3" CMOS	2.74 x 2.74	8/10/12	IMX546 (Pregius S)	GigE Vision (1000BASE-T)
GOX-5105-PGE		5.1 MP (2472 x 2064)	23	1/1.8" CMOS	2.74 x 2.74	8/10/12	IMX547 (Pregius S)	GigE Vision (1000BASE-T)
GOX-5103-PGE		5 MP (2448 x 2048)	22	2/3" CMOS	3.45 x 3.45	8/10/12	IMX264 (Pregius)	GigE Vision (1000BASE-T)
GOX-3201-PGE		3.2 MP (2048 x 1536)	36	1/1.8" CMOS	3.45 x 3.45	8/10/12	IMX265 (Pregius)	GigE Vision (1000BASE-T)
GOX-2402-PGE		2.3 MP (1920 x 1200)	50	1/2.3" CMOS	3.45 x 3.45	8/10/12	IMX392 (Pregius)	GigE Vision (1000BASE-T)



Models with GigE Vision (5GBASE-T) interface (Available end 2022).

Available with color or monochrome sensors

Dimensions: 29 mm x 29 mm x 68.5 mm



Model	Front View	Resolution Megapixels (MP) (horizontal x vertical pixels)	Frame rate fps	Sensor format	Cell size (μm)	Data output (Bit)	Sensor name	Interface
GOX-24505-5GE (Available end. '22)		24.5 MP (5328 x 4608)	22	1.2" CMOS	2.74 x 2.74	8/10/12	IMX540 (Pregius S)	GigE Vision (5GBASE-T)
GOX-20405-5GE (Available end. '22)		20.3 MP (4512 x 4512)	27	1.1" CMOS	2.74 x 2.74	8/10/12	IMX541 (Pregius S)	GigE Vision (5GBASE-T)
GOX-16205-5GE (Available end. '22)		16.2 MP (5328 x 3040)	34	1.1" CMOS	2.74 x 2.74	8/10/12	IMX542 (Pregius S)	GigE Vision (5GBASE-T)
GOX-12405-5GE (Available end. '22)		12.4 MP (4128 x 3008)	45	1/1.1" CMOS	2.74 x 2.74	8/10/12	IMX545 (Pregius S)	GigE Vision (5GBASE-T)
GOX-8105-5GE (Available end. '22)		8.1 MP (2856 x 2848)	69	2/3" CMOS	2.74 x 2.74	8/10/12	IMX546 (Pregius S)	GigE Vision (5GBASE-T)
GOX-5105-5GE (Available end. '22)		5.1 MP (2472 x 2064)	110	1/1.8" CMOS	2.74 x 2.74	8/10/12	IMX547 (Pregius S)	GigE Vision (5GBASE-T)



Models with USB3 Vision interface
Available with color or monochrome sensors



Dimensions: 29 mm x 29 mm x 51.5 mm

Model	Front View	Resolution Megapixels (MP) (horizontal x vertical pixels)	Frame rate fps	Sensor format	Cell size (µm)	Data output (Bit)	Sensor name	Interface
GOX-12401-USB		12.4 MP (4096 x 3000)	23	1.1" CMOS	3.45 x 3.45	8/10/12	IMX304 (Pregius)	USB3 Vision (USB)
GOX-8901-USB		8.9 MP (4096 x 2160)	32	1" CMOS	3.45 x 3.45	8/10/12	IMX267 (Pregius)	USB3 Vision (USB)
GOX-5102-USB		5 MP (2448 x 2048)	74	2/3" CMOS	3.45 x 3.45	8/10/12	IMX250 (Pregius)	USB3 Vision (USB)
GOX-5103-USB		5 MP (2448 x 2048)	35	2/3" CMOS	3.45 x 3.45	8/10/12	IMX264 (Pregius)	USB3 Vision (USB)
GOX-3200-USB		3.2 MP (2048 x 1536)	119	1/1.8" CMOS	3.45 x 3.45	8/10/12	IMX252 (Pregius)	USB3 Vision (USB)
GOX-3201-USB		3.2 MP (2048 x 1536)	55	1/1.8" CMOS	3.45 x 3.45	8/10/12	IMX265 (Pregius)	USB3 Vision (USB)
GOX-2402-USB		2.3 MP (1920 x 1200)	162	1/2.3" CMOS	3.45 x 3.45	8/10/12	IMX392 (Pregius)	USB3 Vision (USB)



Models with CoaXPress (1xCXP-6) interface
Available with color or monochrome sensors



Dimensions: 29 mm x 29 mm x 55.0 mm

Model	Front View	Resolution Megapixels (MP) (horizontal x vertical pixels)	Frame rate fps	Sensor format	Cell size (µm)	Data output (Bit)	Sensor name	Interface
GOX-24505-CXP		24.5 MP (5328 x 4608)	24	1.2" CMOS	2.74 x 2.74	8/10/12	IMX540 (Pregius S)	CoaXPress CXP-6 1-connector
GOX-20405-CXP		20.3 MP (4512 x 4512)	29	1.1" CMOS	2.74 x 2.74	8/10/12	IMX541 (Pregius S)	CoaXPress CXP-6 1-connector
GOX-16205-CXP		16.2 MP (5328 x 3040)	36	1.1" CMOS	2.74 x 2.74	8/10/12	IMX542 (Pregius S)	CoaXPress CXP-6 1-connector
GOX-12405-CXP		12.4 MP (4128 x 3008)	47	1/1.1" CMOS	2.74 x 2.74	8/10/12	IMX545 (Pregius S)	CoaXPress CXP-6 1-connector
GOX-8105-CXP		8.1 MP (2856 x 2848)	71	2/3" CMOS	2.74 x 2.74	8/10/12	IMX546 (Pregius S)	CoaXPress CXP-6 1-connector
GOX-5105-CXP		5.1 MP (2472 x 2064)	112	1/1.8" CMOS	2.74 x 2.74	8/10/12	IMX547 (Pregius S)	CoaXPress CXP-6 1-connector

The Go-X Series is an **ideal choice** for meeting the needs of machine vision **applications** and inspection systems **across a wide range of industries.**

Automation & Automotive



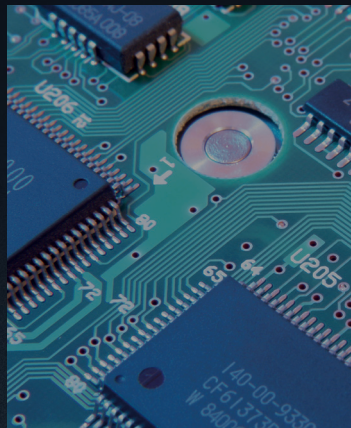
Medical Devices



Pharmaceuticals



Electronics



Traffic and Other Outdoor



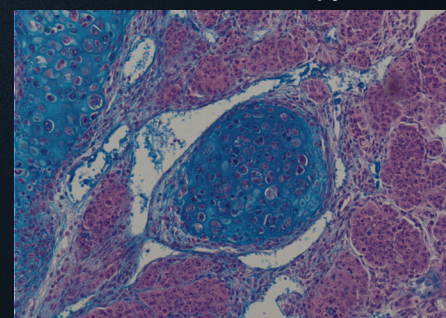
Food & Beverage



Packaging, Logistics & Robotics



Life Sciences/Microscopy



EMEA

Denmark - JAI A/S
E-mail: camerasales.emea@jai.com
Phone: +45 4457 8888

Germany - JAI A/S
E-mail: camerasales.emea@jai.com
Phone: +45 4457 8888

APAC

Japan - JAI Ltd.
camerasales.japan@jai.com
Phone: +81 45-440-0154

Singapore - JAI Asia SG Ltd.
E-mail: camerasales.apac@jai.com
Phone: +65-9239-9592

China - JAI Technology (Beijing) Co., Ltd.
E-mail: camerasales.apac@jai.com
Phone: +8610-8588-0278

Korea - JAI
E-mail: camerasales.apac@jai.com
Phone +82 2 6138 3830

AMERICAS

United States - JAI Inc.
E-mail: camerasales.americas@jai.com
Phone (Toll-Free): 800 445 5444
Phone + 1 408 383 0300



See the possibilities