

LTCLHP080-W

Telecentric HP illuminator, beam diameter 100 mm, white

Optical specifications

Beam diameter	(mm)	100
Working distance range	(mm)	150 ~ 300
Light color, peak wavelength		white

Mechanical specifications

Length (1)	(mm)	277.2
Outer diameter	(mm)	116
Mass	(g)	1348

Electrical specifications

Device power ratings

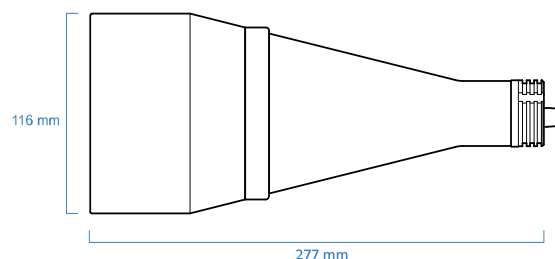
DC voltage minimum	(V)	12
DC voltage maximum	(V)	24
Power consumption	(W)	< 2.5
Max LED forward current (2)	(mA)	350

LED power ratings

Forward voltage (typical) (3)	(V)	2.78
Forward voltage (max) (3)	(V)	n.a.
Max pulse current (4)	(mA)	2000

Compatible telecentric lenses

Compatibility	TC13080, TC12072, TC12080, TC4M072, TC4M080, TC2M080, TC16M080, TC12K080
---------------	--



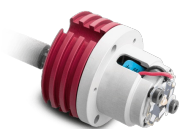
NOTES

1. Nominal value, with no spacers in place.
2. Used in continuous (not pulsed) mode.
3. At max forward current. Tolerance is $\pm 0.06V$ on forward voltage measurements.
4. At pulse width ≤ 10 ms, duty cycle $\leq 10\%$ condition. Built-in electronics board must be bypassed (see tech info).

COMPATIBLE PRODUCTS



CMHO 080
Clamping mechanics for TCx072, TCx080, LTCL080-X illuminators and PCx030XS



LTSCHP 1W-W
Replacement LED module, white



LED1W-W
Replacement LED source for LTSCHP1W series, white



CB244P1500
Power cable for LTSCHP1W LED modules