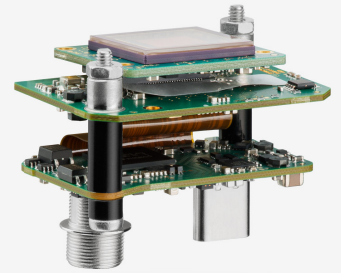
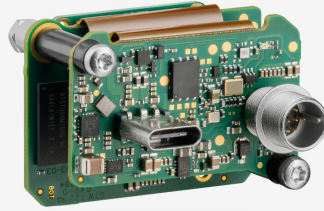
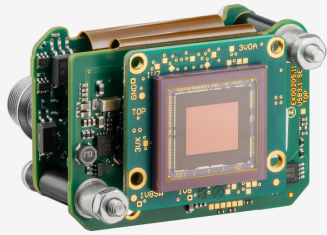


U3-3272SE-C (AB02866)



In series

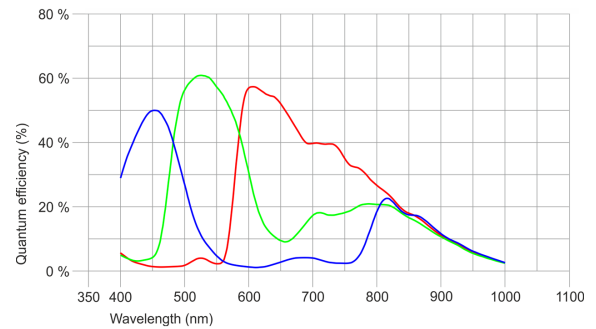
The model is in series and available for the long term.



Specification

Sensor

| | |
|---|----------------------|
| Sensor type | CMOS Color |
| Shutter | Global Shutter |
| Sensor characteristic | Linear |
| Readout mode | Progressive scan |
| Pixel Class | 3 MP |
| Resolution | 3.15 Mpix |
| Resolution (h x v) | 2048 x 1536 Pixel |
| Aspect ratio | 4:3 |
| ADC | 12 bit |
| Color depth (camera) | 12 bit |
| Optical sensor class | 1/1.8" |
| Optical Size | 7.066 mm x 5.300 mm |
| Optical sensor diagonal | 8.83 mm (1/1.81") |
| Pixel size | 3.45 µm |
| Manufacturer | Sony |
| Sensor Model | IMX265LQR-C |
| Gain (master/RGB) | 24x/4x |
| AOI horizontal | same frame rate |
| AOI vertical | increased frame rate |
| AOI image width / step width | 264 / 8 |
| AOI image height / step width | 2 / 2 |
| AOI position grid (horizontal/vertical) | 8 / 2 |
| Binning horizontal | same frame rate |
| Binning vertical | same frame rate |
| Binning method | M/C automatic |
| Binning factor | 2 / 4 / 8 |
| Subsampling horizontal | same frame rate |
| Subsampling vertical | same frame rate |
| Subsampling method | M/C automatic |
| Subsampling factor | 2, 4, 8 |



Subject to technical modifications (2022-04-25)

Model

| | |
|-----------------------------------|--------------------|
| Frame rate freerun mode | 58 |
| Frame rate trigger (continuous) | 58 |
| Frame rate trigger (maximum) | 59 |
| Exposure time (minimum - maximum) | 0.025 ms - 2000 ms |
| Long exposure (maximum) | 90000 ms |
| Power consumption | 1.6 W - 3.2 W |
| Image memory | 128 MB |

Ambient conditions

The temperature values given below refer to the outer device temperature of the camera housing. For PCB versions, refer to the separate hints in the respective documentation.

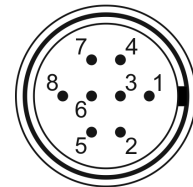
| | |
|-------------------------------------|---------------------------------|
| Device temperature during operation | 0 °C - 55 °C / 32 °F - 131 °F |
| Device temperature during storage | -20 °C - 60 °C / -4 °F - 140 °F |
| Humidity (relative, non-condensing) | 20 % - 80 % |

Connectors

| | |
|---------------------|---|
| Interface connector | USB Type-C |
| I/O connector | 8-pin Hirose connector (HR25-7TR-8PA(73)) |
| Power supply | USB cable |

Pin assignment I/O connector

| | |
|---|---|
| 1 | Ground (GND) |
| 2 | Flash output with optocoupler (-) |
| 3 | General Purpose I/O (GPIO) 1, 3.3 V |
| 4 | Trigger input with optocoupler (-) |
| 5 | Flash output with optocoupler (+) |
| 6 | General Purpose I/O (GPIO) 2, 3.3 V |
| 7 | Trigger input with optocoupler (+) |
| 8 | Voltage output (USB Power Delivery), 5-15 V |



Camera rear view

Design

| | |
|------------------|-----------------------------|
| Lens Mount | - |
| IP code | - |
| Dimensions H/W/L | 29.5 mm x 40.0 mm x 25.0 mm |
| Mass | 20 g |