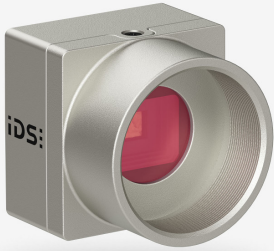


In series

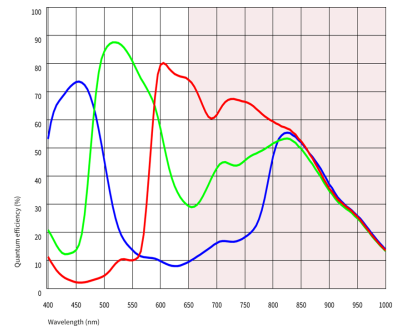
The model is in series and available for the long term.



Specification

Sensor

Sensor type	CMOS Color
Shutter	Rolling shutter
Sensor characteristic	Linear
Readout mode	Progressive scan
Pixel Class	5 MP
Resolution	5.08 Mpix
Resolution (h x v)	2592 x 1960 Pixel
Aspect ratio	4:3
ADC	12 bit
Color depth (camera)	12 bit
Optical sensor class	1/3"
Optical Size	5.184 mm x 3.920 mm
Optical sensor diagonal	6.5 mm (1/2.46")
Pixel size	2 μm
Micro lens shift	0.00
Manufacturer	Sony
Sensor Model	IMX675-AAQR1-C
Gain (master/RGB)	31.6x/-
AOI horizontal	same frame rate
AOI vertical	increased frame rate
AOI image width / step width	1056 / 48
AOI image height / step width	956 / 4
AOI position grid (horizontal/vertical)	4 / 2
Binning horizontal	increased frame rate
Binning vertical	increased frame rate
Binning method	-
Binning factor	-
Subsampling horizontal	-
Subsampling vertical	-
Subsampling method	-
Subsampling factor	-



Subject to technical modifications (2024-05-18)

Model

Frame rate freerun mode (in 10-bit mode)	40 fps
Frame rate trigger (maximum)	-
Exposure time (minimum - maximum)	0.012 ms - 2000 ms
Power consumption	1 W - 1 W

Ambient conditions

The temperature values given below refer to the outer device temperature of the camera housing.

Device temperature during operation	0 °C - 55 °C / 32 °F - 131 °F
Device temperature during storage	-20 °C - 60 °C / -4 °F - 140 °F
Humidity (relative, non-condensing)	20 % - 80 %

Connectors

Interface connector	USB 3.0 micro-B, screwable
I/O connector	8-pin connector
Power supply	USB cable

Pin assignment I/O connector

1	Voltage output 3.3 V
2	Ground (GND)
3	Flash output without optocoupler - Line 1
4	Trigger input without optocoupler - Line 0
5	General Purpose I/O (GPIO) 1 - Line 2
6	General Purpose I/O (GPIO) 2 - Line 3
7	Ground (GND)
8	



Design

Lens Mount	C-Mount
IP code	IP30
Dimensions H/W/L	29.0 mm x 29.0 mm x 17.0 mm
Mass	62 g

Features

Image Acquisition	Freerun	✓
	Software trigger	✓
	Hardware trigger	✓
	Trigger controlled exposure	-
	Denoiser	-
	Long exposure	-
	Line scan	-
	Line scan highspeed	-
Flashing	Global start	-
	Flashing	-
	PWM flashing	-

Image Adjustments

Auto exposure	-
Auto gain	-
Auto whitebalance	-
Color correction	-
Gamma	-
LUT	-
Mirror/flip	X/Y

On-board Image Processing

Pixel formats	BayerRG10g40IDS BayerRG12g24IDS
Region of interest	✓
Decimation (FPGA)	-
Decimation (Sensor)	-
Binning (FPGA)	-
Binning (Sensor)	2x2 Horizontal and vertical binning can only be applied jointly.

Others

Chunks	-
Sequencer	-
Events	-
Firmware update	✓
1st supported firmware version	3.34