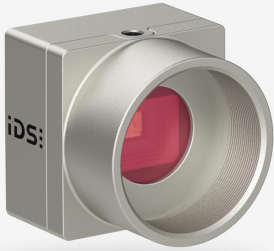


In series

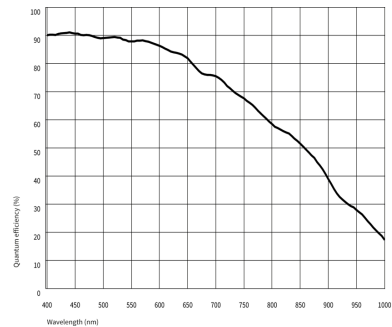
The model is in series and available for the long term.



Specification

Sensor

| | |
|---|----------------------|
| Sensor type | CMOS Mono |
| Shutter | Rolling shutter |
| Sensor characteristic | Linear |
| Readout mode | Progressive scan |
| Pixel Class | 5 MP |
| Resolution | 5.08 Mpix |
| Resolution (h x v) | 2592 x 1960 Pixel |
| Aspect ratio | 4:3 |
| ADC | 12 bit |
| Color depth (camera) | 12 bit |
| Optical sensor class | 1/3" |
| Optical Size | 5.184 mm x 3.920 mm |
| Optical sensor diagonal | 6.5 mm (1/2.46") |
| Pixel size | 2 μm |
| Micro lens shift | 0.00 |
| Manufacturer | Sony |
| Sensor Model | IMX675-AAMR-C |
| Gain (master/RGB) | 31.6x/- |
| AOI horizontal | same frame rate |
| AOI vertical | increased frame rate |
| AOI image width / step width | 1056 / 48 |
| AOI image height / step width | 956 / 4 |
| AOI position grid (horizontal/vertical) | 4 / 2 |
| Binning horizontal | increased frame rate |
| Binning vertical | increased frame rate |
| Binning method | - |
| Binning factor | - |
| Subsampling horizontal | - |
| Subsampling vertical | - |
| Subsampling method | - |
| Subsampling factor | - |



Subject to technical modifications (2024-05-18)

Model

| | |
|--|--------------------|
| Frame rate freerun mode (in 10-bit mode) | 40 fps |
| Frame rate trigger (maximum) | - |
| Exposure time (minimum - maximum) | 0.012 ms - 2000 ms |
| Power consumption | 1 W - 1 W |

Ambient conditions

The temperature values given below refer to the outer device temperature of the camera housing.

| | |
|-------------------------------------|---------------------------------|
| Device temperature during operation | 0 °C - 55 °C / 32 °F - 131 °F |
| Device temperature during storage | -20 °C - 60 °C / -4 °F - 140 °F |
| Humidity (relative, non-condensing) | 20 % - 80 % |

Connectors

| | |
|---------------------|----------------------------|
| Interface connector | USB 3.0 micro-B, screwable |
| I/O connector | 8-pin connector |
| Power supply | USB cable |

Pin assignment I/O connector

| | |
|---|--|
| 1 | Voltage output 3.3 V |
| 2 | Ground (GND) |
| 3 | Flash output without optocoupler - Line 1 |
| 4 | Trigger input without optocoupler - Line 0 |
| 5 | General Purpose I/O (GPIO) 1 - Line 2 |
| 6 | General Purpose I/O (GPIO) 2 - Line 3 |
| 7 | Ground (GND) |
| 8 | |



Design

| | |
|------------------|-----------------------------|
| Lens Mount | C-Mount |
| IP code | IP30 |
| Dimensions H/W/L | 29.0 mm x 29.0 mm x 17.0 mm |
| Mass | 62 g |

Features

| | | |
|-------------------|-----------------------------|---|
| Image Acquisition | Freerun | ✓ |
| | Software trigger | ✓ |
| | Hardware trigger | ✓ |
| | Trigger controlled exposure | - |
| | Denoiser | - |
| | Long exposure | - |
| | Line scan | - |
| | Line scan highspeed | - |
| Flashing | Global start | - |
| | Flashing | - |
| | PWM flashing | - |

| | | |
|---------------------------|--------------------------------|---|
| Image Adjustments | Auto exposure | - |
| | Auto gain | - |
| | Auto whitebalance | - |
| | Color correction | - |
| | Gamma | - |
| | LUT | - |
| | Mirror/flip | X/Y |
| On-board Image Processing | Pixel formats | Mono10g40IDS Mono12g24IDS |
| | Region of interest | ✓ |
| | Decimation (FPGA) | - |
| | Decimation (Sensor) | - |
| | Binning (FPGA) | - |
| | Binning (Sensor) | 2x2 Horizontal and vertical binning can only be applied jointly. |
| Others | Chunks | - |
| | Sequencer | - |
| | Events | - |
| | Firmware update | ✓ |
| | 1st supported firmware version | 3.34 |