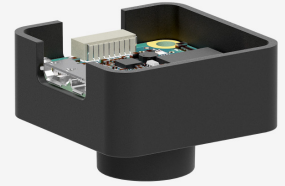


In series

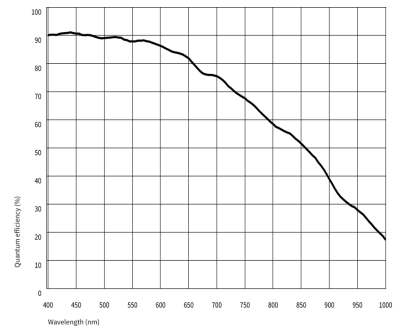
The model is in series and available for the long term.



Specification

Sensor

Sensor type	CMOS Mono
Shutter	Rolling shutter
Sensor characteristic	Linear
Readout mode	Progressive scan
Pixel Class	5 MP
Resolution	5.08 Mpix
Resolution (h x v)	2592 x 1960 Pixel
Aspect ratio	4:3
ADC	12 bit
Color depth (camera)	12 bit
Optical sensor class	1/3"
Optical Size	5.184 mm x 3.920 mm
Optical sensor diagonal	6.5 mm (1/2.46")
Pixel size	2 μm
Micro lens shift	0.00
Manufacturer	Sony
Sensor Model	IMX675-AAMR-C
Gain (master/RGB)	31.6x/-
AOI horizontal	same frame rate
AOI vertical	increased frame rate
AOI image width / step width	1056 / 48
AOI image height / step width	956 / 4
AOI position grid (horizontal/vertical)	4 / 2
Binning horizontal	increased frame rate
Binning vertical	increased frame rate
Binning method	-
Binning factor	-
Subsampling horizontal	-
Subsampling vertical	-
Subsampling method	-
Subsampling factor	-



Subject to technical modifications (2024-05-30)

Model

Frame rate freerun mode (in 10-bit mode)	40 fps
Frame rate trigger (maximum)	-
Exposure time (minimum - maximum)	0.012 ms - 2000 ms
Power consumption	0.5 W - 1 W

Ambient conditions

The temperature values given below refer to the outer device temperature of the camera housing.
For PCB versions, refer to the separate hints in the respective documentation.

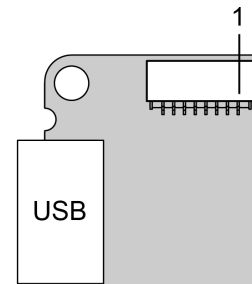
Device temperature during operation	0 °C - 55 °C / 32 °F - 131 °F
Device temperature during storage	-20 °C - 80 °C / -4 °F - 176 °F
Humidity (relative, non-condensing)	20 % - 80 %

Connectors

Interface connector	USB 3.0 micro-B
I/O connector	8-pin connector
Power supply	USB cable

Pin assignment I/O connector

1	Voltage output 3.3 V
2	Ground (GND)
3	Flash output without optocoupler - Line 1
4	Trigger input without optocoupler - Line 0
5	General Purpose I/O (GPIO) 1 - Line 2
6	General Purpose I/O (GPIO) 2 - Line 3
7	Ground (GND)
8	USB Power: 5 V, max. 400 mA



Design

Lens Mount	S-Mount
IP code	-
Dimensions H/W/L	32.5 mm x 32.5 mm x 14.0 mm
Mass	10 g

Features

Image Acquisition	Freerun	✓
	Software trigger	✓
	Hardware trigger	✓
	Trigger controlled exposure	-
	Denoisier	-
	Long exposure	-
	Line scan	-
	Line scan highspeed	-
Flashing	Global start	-
	Flashing	-
	PWM flashing	-

Image Adjustments

Auto exposure	-
Auto gain	-
Auto whitebalance	-
Color correction	-
Gamma	-
LUT	-
Mirror/flip	X/Y

On-board Image Processing

Pixel formats	Mono10g40IDS Mono12g24IDS
Region of interest	✓
Decimation (FPGA)	-
Decimation (Sensor)	-
Binning (FPGA)	-
Binning (Sensor)	2x2 Horizontal and vertical binning can only be applied jointly.

Others

Chunks	-
Sequencer	-
Events	-
Firmware update	✓
1st supported firmware version	3.34