

In series

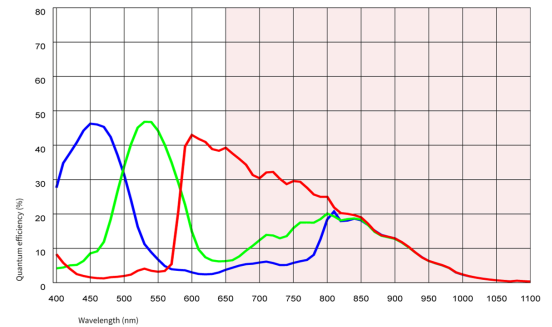
The model is in series and available for the long term.



Specification

Sensor

| | |
|---|---|
| Sensor type | CMOS Color |
| Shutter | Global Shutter / Rolling shutter / Global Start Shutter |
| Sensor characteristic | Linear |
| Readout mode | Progressive scan |
| Pixel Class | 1.3 MP |
| Resolution | 1.31 Mpix |
| Resolution (h x v) | 1280 x 1024 Pixel |
| Aspect ratio | 5:4 |
| ADC | 10 bit |
| Color depth (camera) | 8 bit |
| Optical sensor class | 1/1.8" |
| Optical Size | 6.784 mm x 5.427 mm) |
| Optical sensor diagonal | 8.69 mm (1/1.84") |
| Pixel size | 5.3 μm |
| Manufacturer | e2v |
| Sensor Model | EV76C560ACT |
| Gain (master/RGB) | 4x/4x |
| AOI horizontal | same frame rate |
| AOI vertical | increased frame rate |
| AOI image width / step width | 16 / 4 |
| AOI image height / step width | 4 / 2 |
| AOI position grid (horizontal/vertical) | 2 / 2 |
| Binning horizontal | same frame rate |
| Binning vertical | same frame rate |
| Binning method | M/C automatic |
| Binning factor | 2 |
| Decimation (subsampling) horizontal | - |
| Decimation (subsampling) vertical | - |
| Decimation (subsampling) Modes | - |
| Decimation (subsampling) factor | - |



Subject to technical modifications (2024-11-22)

Model

| | |
|-----------------------------------|--|
| Pixel clock range | 7 MHz - 35 MHz |
| Frame rate freerun mode | 25 fps |
| Frame rate trigger (maximum) | 24 fps |
| Exposure time (minimum - maximum) | 0.009 ms - 2000 ms |
| Power consumption | 0.3 W - 0.7 W |
| Special features | Scaler Sequencer Log mode Sensor hot pixel correction Fine exposure Multi-AOI |

Ambient conditions

The temperature values given below refer to the outer device temperature of the camera housing.

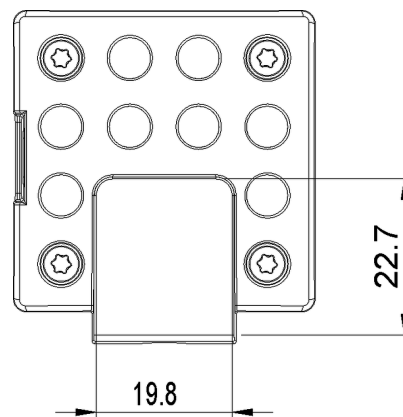
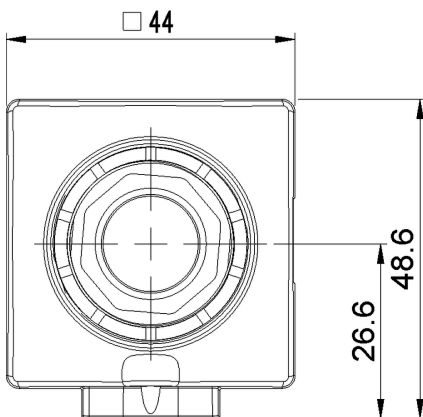
| | |
|---|---------------------------------|
| Allowed device temperature during operation | 0 °C - 55 °C / 32 °F - 131 °F |
| Allowed device temperature during storage | -20 °C - 80 °C / -4 °F - 176 °F |
| Humidity (relative, non-condensing) | 20 % - 80 % |

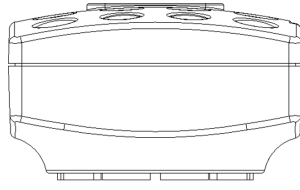
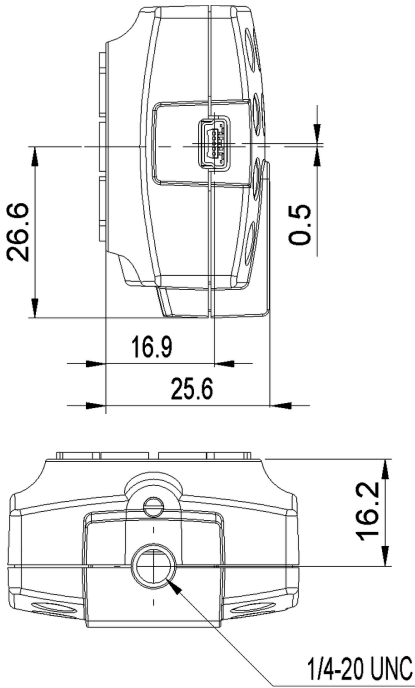
Connectors

| | |
|---------------------|----------------|
| Interface connector | USB 2.0 mini-B |
| I/O connector | - |
| Power supply | USB cable |

Design

| | |
|------------------|-----------------------------|
| Lens Mount | CS- / C-Mount |
| IP code | IP30 |
| Dimensions H/W/L | 48.6 mm x 44.0 mm x 25.6 mm |
| Mass | 41 g |





Features

Image Acquisition

| | |
|-----------------------------|---|
| Freerun | ✓ |
| Software trigger | - |
| Hardware trigger | ✓ |
| Trigger controlled exposure | - |
| Denoisier | - |
| Long exposure | - |
| Line scan | - |
| Line scan highspeed | - |
| Global start | ✓ |

Flashing

| | |
|--------------|---|
| Flashing | - |
| PWM flashing | - |

Image Adjustments

| | |
|-------------------|---|
| Auto exposure | - |
| Auto gain | - |
| Auto whitebalance | - |
| Color correction | - |
| Gamma | - |
| LUT | - |
| Mirror/flip | - |

On-board Image Processing

| | |
|---------------------|---|
| Pixel formats | |
| Region of interest | ✓ |
| Decimation (FPGA) | - |
| Decimation (Sensor) | |
| Binning (FPGA) | - |

Others

| | |
|--------------------------------|------|
| Chunks | - |
| Sequencer | ✓ |
| Firmware update | - |
| 1st supported firmware version | 3.80 |