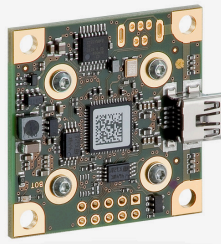
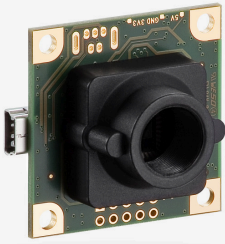


**In series**

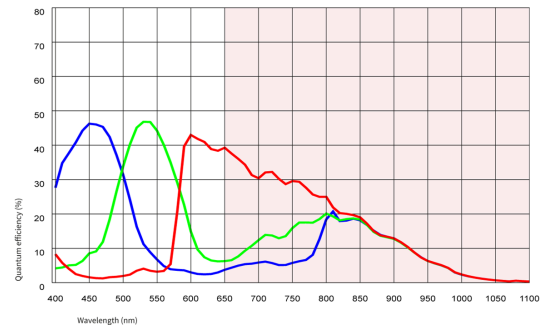
The model is in series and available for the long term.



## Specification

### Sensor

Sensor type	CMOS Color
Shutter	Global Shutter / Rolling shutter / Global Start Shutter
Sensor characteristic	Linear
Readout mode	Progressive scan
Pixel Class	1.3 MP
Resolution	1.31 Mpix
Resolution (h x v)	1280 x 1024 Pixel
Aspect ratio	5:4
ADC	10 bit
Color depth (camera)	8 bit
Optical sensor class	1/1.8"
Optical Size	6.784 mm x 5.427 mm)
Optical sensor diagonal	8.69 mm (1/1.84")
Pixel size	5.3 μm
Manufacturer	e2v
Sensor Model	EV76C560ACT
Gain (master/RGB)	4x/4x
AOI horizontal	same frame rate
AOI vertical	increased frame rate
AOI image width / step width	16 / 4
AOI image height / step width	4 / 2
AOI position grid (horizontal/vertical)	2 / 2
Binning horizontal	same frame rate
Binning vertical	same frame rate
Binning method	M/C automatic
Binning factor	2
Decimation (subsampling) horizontal	-
Decimation (subsampling) vertical	-
Decimation (subsampling) Modes	-
Decimation (subsampling) factor	-



Subject to technical modifications (2024-11-22)

## Model

Pixel clock range	7 MHz - 35 MHz
Frame rate freerun mode	25 fps
Frame rate trigger (maximum)	24 fps
Exposure time (minimum - maximum)	0.009 ms - 2000 ms
Power consumption	0.3 W - 0.7 W
Special features	Scaler Sequencer Log mode Sensor hot pixel correction Fine exposure Multi-AOI

## Ambient conditions

For PCB versions, refer to the separate hints in the respective documentation.

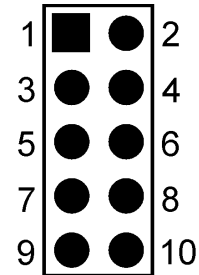
Allowed device temperature during operation	0 °C - 55 °C / 32 °F - 131 °F
Allowed device temperature during storage	-20 °C - 80 °C / -4 °F - 176 °F
Humidity (relative, non-condensing)	20 % - 80 %

## Connectors

Interface connector	USB 2.0 mini-B
I/O connector	10-pin plated-through holes
Power supply	USB cable

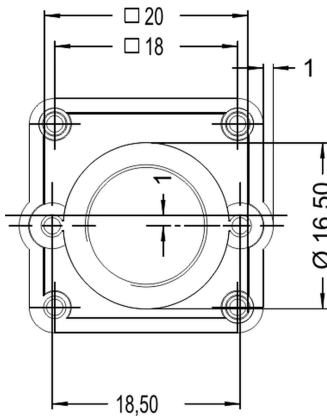
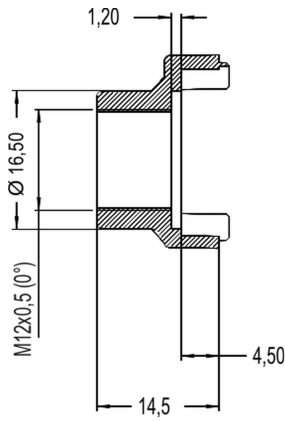
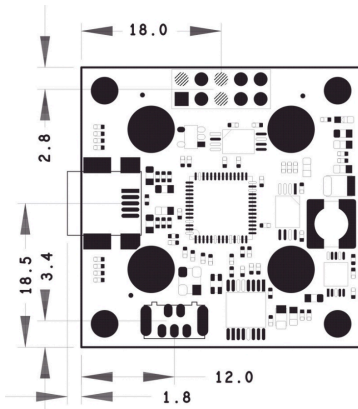
## Pin assignment I/O connector

1	USB Power supply (VCC) 5 V
2	USB Ground (GND)
3	Trigger input without optocoupler (+)
4	Flash output without optocoupler (+)
5	Power supply (internal voltage transformer), 3.3 V or 3.0 V (sensor-dependent)
6	USB Ground (GND)
7	General Purpose I/O (GPIO) 1
8	General Purpose I/O (GPIO) 2
9	I2C bus clock signal
10	I2C bus data signal



## Design

Lens Mount	S-Mount
IP code	-
Dimensions H/W/L	36.0 mm x 36.0 mm x 20.2 mm
Mass	16 g



## Features

### Image Acquisition

Freerun	✓
Software trigger	-
Hardware trigger	✓
Trigger controlled exposure	-
Denoiser	-
Long exposure	-
Line scan	-
Line scan highspeed	-
Global start	✓

### Flashing

Flashing	-
PWM flashing	-

### Image Adjustments

Auto exposure	-
Auto gain	-
Auto whitebalance	-
Color correction	-
Gamma	-
LUT	-
Mirror/flip	-

On-board Image Processing

Pixel formats	
Region of interest	✓
Decimation (FPGA)	-
Decimation (Sensor)	
Binning (FPGA)	-

Others

Chunks	-
Sequencer	✓
Firmware update	-
1st supported firmware version	3.80