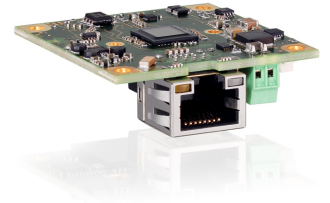
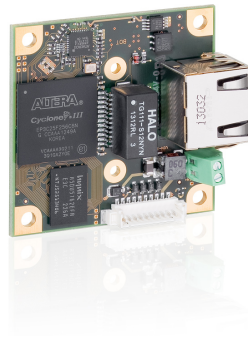
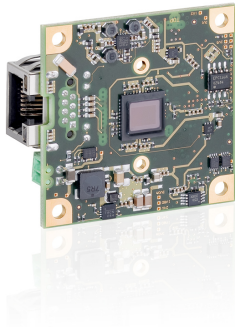


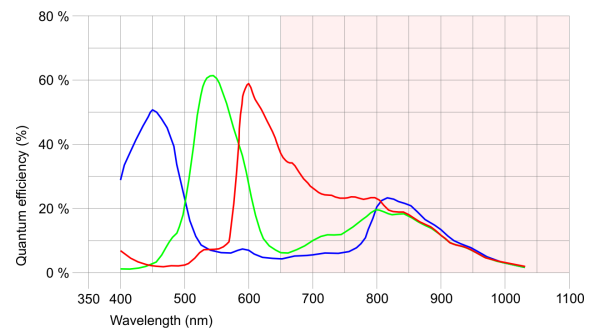
UI-5582LE-C



Specification

Sensor

Sensor Technology	CMOS Color
Manufacturer	Aptina
Resolution (h x v)	2560 x 1920
Color depth (sensor)	12 bit
Color depth (camera)	12 bit
Pixel Class	5 MP
Sensor Size	1/2"
Shutter	Rolling shutter/Global start shutter
max. fps in Freerun Mode	14.1
Binning Modes	Color
Subsampling Modes	Color
Sensor Model	MT9P006STC
Pixel size	2.2 μ m
Optical Size	5.632 mm x 4.224 mm

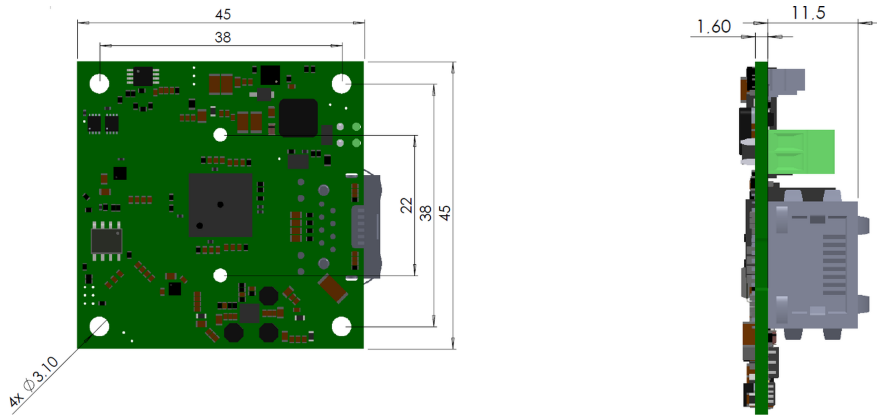


Design

Interface	GigE
Lens Mount	-
I/O In	1 x TTL
I/O Out	1 x TTL
I/O RS-232	-
I/O GPIO	2
I/O I2C	1
Protection Class	-
Dimensions H/W/L	45.0 mm x 45.0 mm x 13.0 mm
Mass	24 g
Power supply	12V - 24V

Subject to technical modifications

UI-5582LE-C



Subject to technical modifications

Page 2 of 2

<http://www.ids-imaging.com>