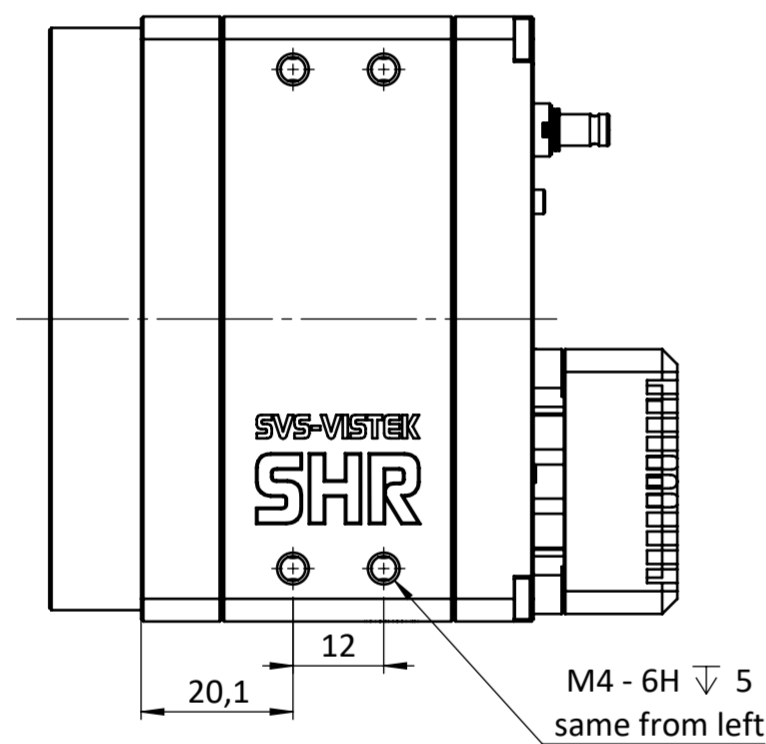
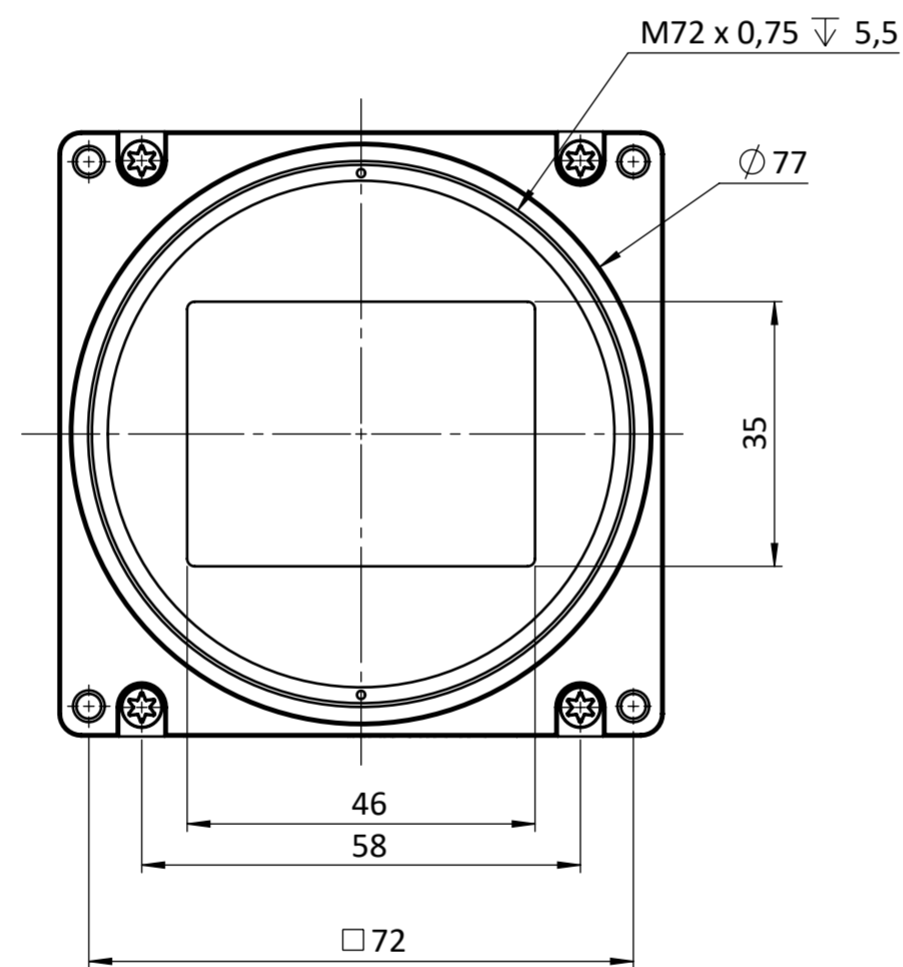


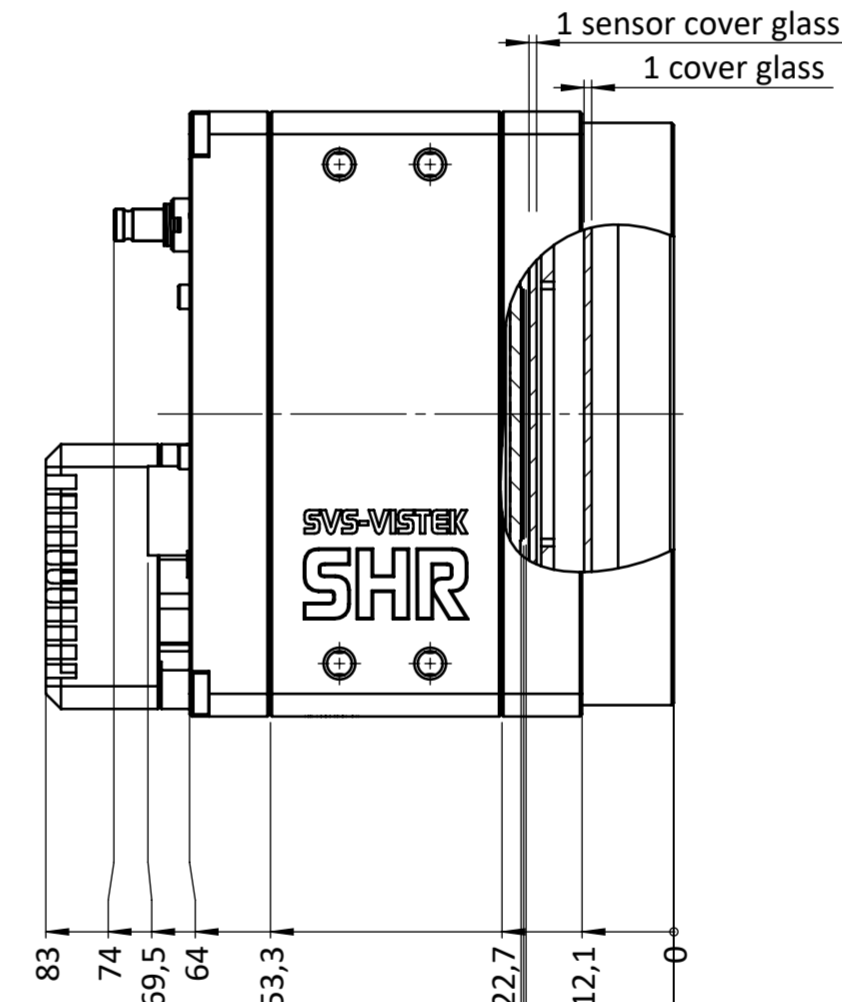
right view



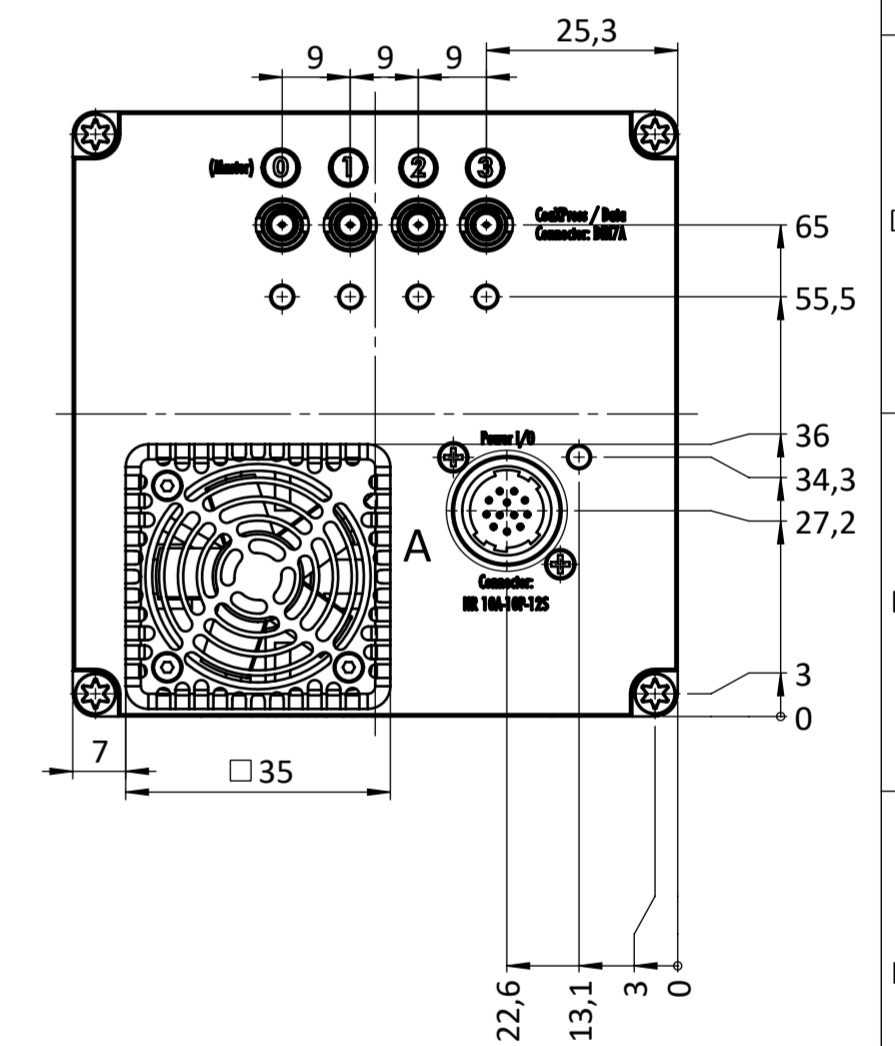
front view



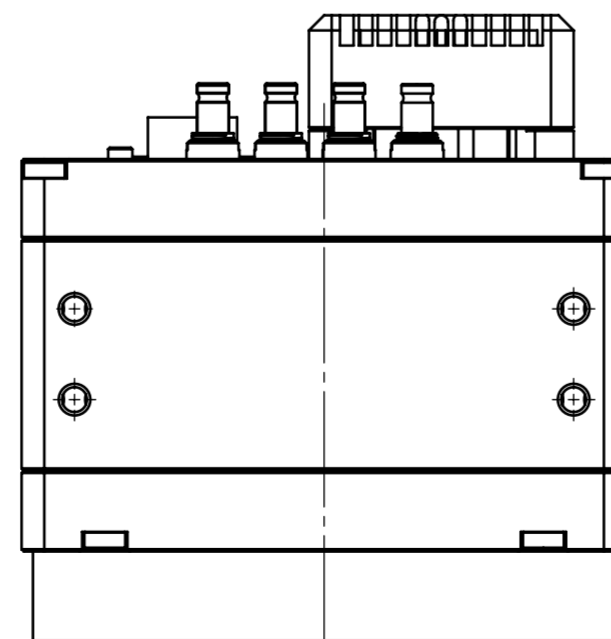
left view



back view



top view



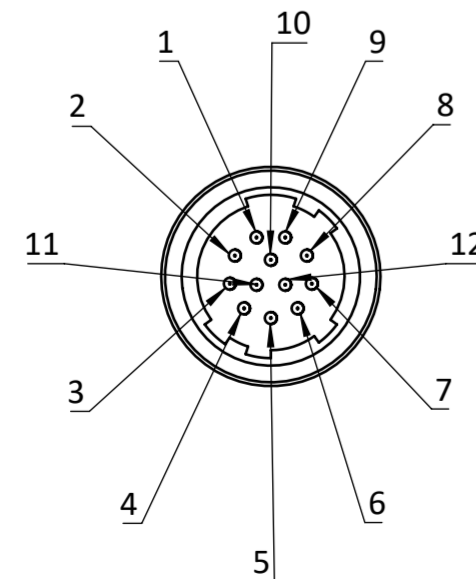
19,55 optical distance

19,88 optical back focus
incl. cover glass
compensation

20,21 mechanical adjustment
without compensation

drawing applies to
mono and color cameras

Hirose Connector



DETAIL A
MAßSTAB 2 : 1

Hirose Pinout	
EXO, FXO, HR (CL Deca, CXP), SHR	
Pin	Signal
1	V IN- (GND)
2	V IN+ (10 - 25V)
3	IN 4 RxD (RS232)
4	OUT 4 TxD (RS232)
5	IN 1 (0 - 24V)
6	IN 2 (0 - 24V)
7	OUT 1 (open drain)
8	OUT 2 (open drain)
9	IN 3+ (opto IN+)
10	IN 3- (opto IN-)
11	OUT 3 (open drain)
12	OUT 0 (open drain)
	Shielding

		all dimensions in mm unless otherwise specified		Scale: 1:1		Rev.: 1	
				Customer Interface Drawing			
Drawn: S.Seller Checked: W.Schreiber		Name: S.Seller Date: 19.02.2021		Title: SHR461xCX			
		Material:		Material No.:		A2	
		Weight:				Blatt/Sheet 1/1	