

Spyder2 S2-1x-xxx40

Line Scan Cameras



Key Features

- Resolutions from 512 to 2k
- High responsivity
- Base Camera Link™
- 8 or 10 bit selectable output
- Single 12 V to 15 V power supply
- Compact design

Programmability

- Programmable pixel to pixel correction
- Adjustable analog and digital gain and offset
- 8 or 10 bit selectable output
- Adjustable integration time and line rate
- Test pattern, line statistics, and camera diagnostics

Typical Applications

- Web inspection (multi-cam and narrow web)
- Pick and place
- Document scanning
- Flat panel display inspection

Overview

The Spyder2 is powerful yet very cost effective.

The Spyder2 is a small, fast, and cost effective camera boasting a full feature set and a Camera Link™ interface. The Spyder2 surpasses its predecessor in responsivity and programmability, requires less lighting, and offers precise control over key performance variables such as gain and offset. With a single tap operating at 40 MHz, the Spyder2 provides the throughput your application requires with no compromise to image quality. For those OEMs migrating from the original Spyder, the Spyder2 does not require a new optics design because pixel size and fill factor remain unchanged from the original Spyder at 14 μm and 100% respectively.

In addition to its high performance and affordability, the Spyder2 also incorporates advanced features such as flat field correction and CDS (Correlated Double Sampling). All resolutions provide appropriate, readily available standard lens options (C mount and F mount).

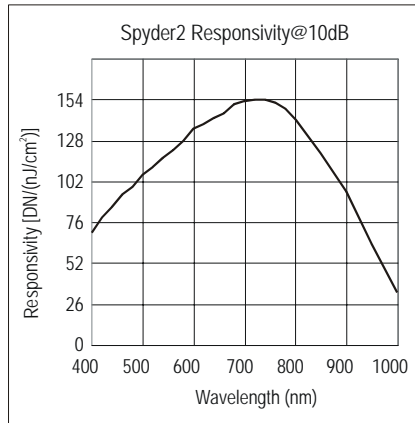
Specifications

Resolution	512 / 1024 / 2048
Data Rate	40MHz
Max. Line/Frame Rate	65 / 35 / 18 kHz
Pixel Size	14 μm
Data Format	8, 10 bit
Output	Base Camera Link
Lens Mount	See Chart
Responsivity	136 DN/(nJ/cm ²) @ 10 dB
Dynamic Range	54 dB
Nominal Gain Range	±10 dB
Size	50 mm x 85 mm x 53.7 mm
Mass	<450 g
Operating Temp	10 °C to 50 °C
Power Supply	12 V to 15 V
Power Dissipation	<5 W
Regulatory Compliance	CE
Control	MDR26 Camera Link
Data	Shared with Control
Power	Hirose HR10 6 pin
Example Part Number	S2-11-01K40

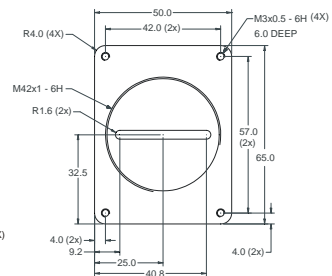
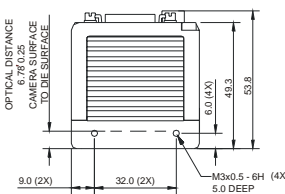
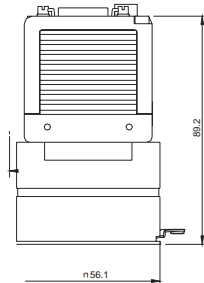
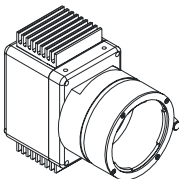
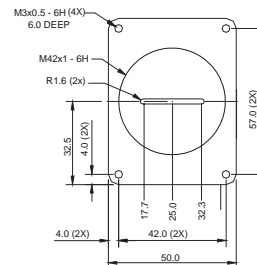
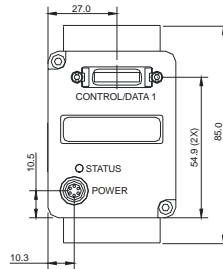
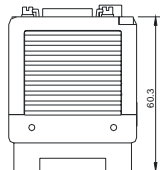
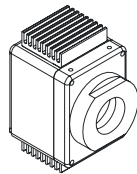
Spyder2 S2-1x-xxx40

Line Scan Cameras

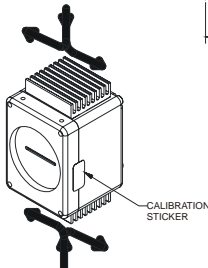
The Spyder2 is powerful and versatile yet very cost effective. Its Camera Link interface means cheaper cabling.



C-MOUNT



F-MOUNT
All units in mm.



Camera Resolution	Available Lens Mount Options	Order Option	Lens Mount Configuration
0512, 1 tap	No mount, C-mount, F-mount	S2-10-0xx40	No mount or adapter
1K, 1 tap	No mount, C-mount, F-mount	S2-11-0xx40	C-mount
2K, 1 tap	No mount, C-mount, F-mount	S2-12-0xx40	F-mount

E.g. S2-12-02k40 is a 2k camera with an F-mount

