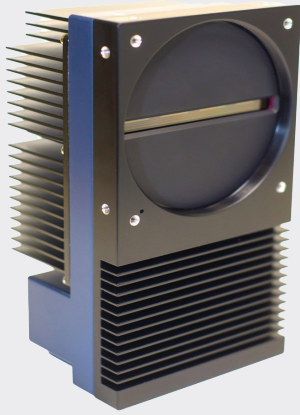


LINEA™ HS2

Ultra High-Speed TDI Cameras



KEY FEATURES

- 1 MHz max line rate
- 65dB dynamic range
- Onchip 2x binning
- Mono/HDR/HFW
- Multi-arrays TDI
- Dual CLHS CX4 AOC output

TYPICAL APPLICATIONS

- Semi-conductor inspection
- High density interconnect
- Flat Panel Display
- Genomics and life sciences
- Electronics & high density packaging
- Web inspection
- General machine vision

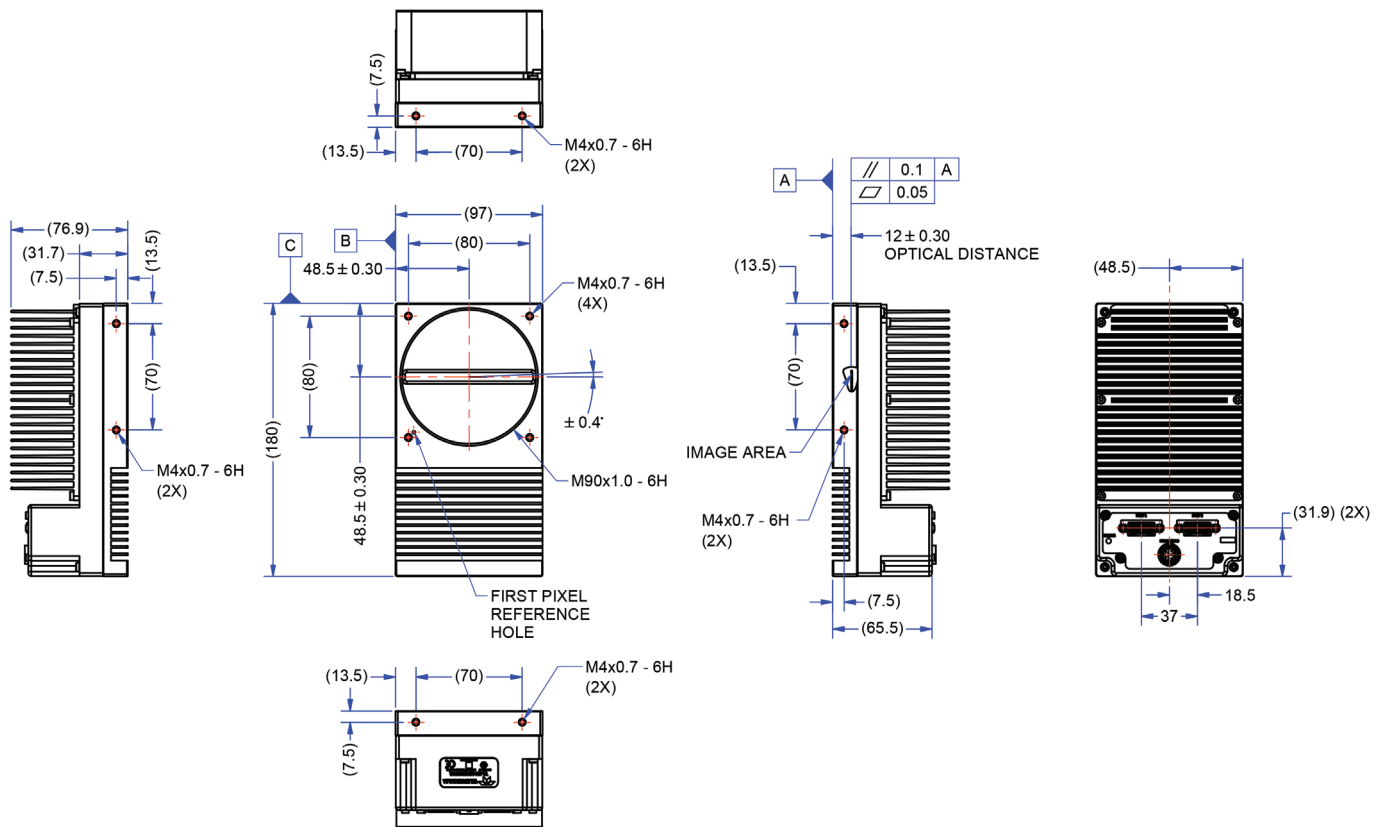
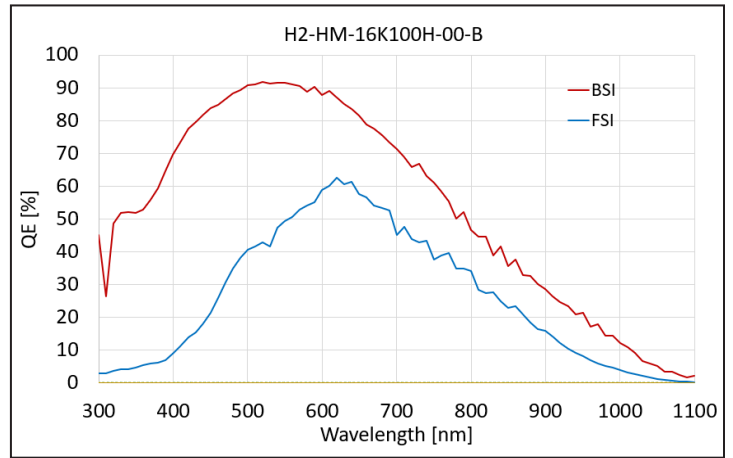
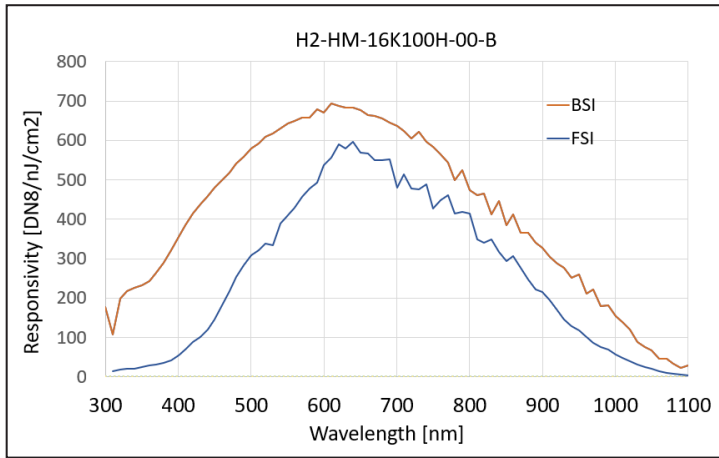
Industry's First 16K 1MHz TDI Camera

Teledyne DALSA's new Linea HS2 camera represents another breakthrough in next generation TDI technology. Designed for ultra high speed imaging in light starved condition, this camera offers superior image quality with 16k resolution at a max line rate 1MHz. It has dual CLHS data interface that achieves 16GB/s data throughput with field-proven reliability in high-speed data transmission.

SPECIFICATIONS

| Model | H2-HM-16k100H-00-B |
|-------------------------|--|
| Resolution (pixels) | 16, 384 x (128+128+32) |
| Maximum Line Rate (kHz) | 1000 |
| Pixel Size (µm) | 5 x 5 |
| Data Format (bit) | 8 or 10 |
| QE (peak)% | 90 |
| Dynamic Range (dB) | 65 |
| Full Well (ke-) | 30 |
| Read Noise (e-) | 17 |
| Power Dissipation (W) | 56 |
| Operating Temp (°C) | 0 ~ 50 frontplate |
| Camera Size (mm) | 97 (W) x 180 (H) x 76.9 (D) |
| Camera Weight (kg) | 1.48 |
| Lens Mount | M90x1 |
| Data Interface | Dual CLHS CX4 |
| GPIO | Direction and independent line control |
| Power | +24 VDC, Hirose 12 pin |
| Regulatory compliant | CE, FCC, UL, KC and RoHS |

SPECIFICATIONS



FOR MORE INFORMATION CONTACT:

AMERICAS Boston, USA | +1 978-670-2000 | TDI_sales.americas@teledynedalsa.com
 EUROPE Krailling, Germany | +49 89-89-54-57-3-80 | TDI_sales.europe@teledynedalsa.com
 ASIA PACIFIC Tokyo, Japan | +81 3-5960-6353 | TDI_sales.asia@teledynedalsa.com
 Shanghai, China | +86 21-3368-0027 | TDI_sales.asia@teledynedalsa.com

This document does not contain information whose export/transfer/disclosure is restricted by the Canadian Export Control regulation. Teledyne DALSA has its corporate offices in Waterloo, Canada. Teledyne DALSA reserves the right to make changes at any time without notice. © Teledyne DALSA.

Revision Number: 03-070-2501600
 Revision Date: 2024 09 16