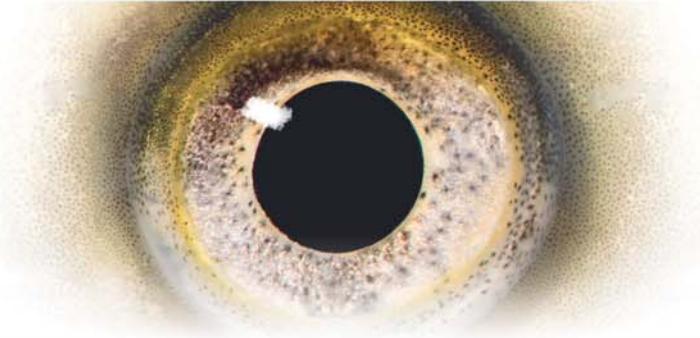
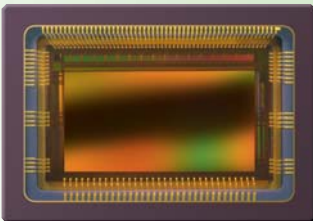


## CMV2000



# High speed global shutter machine vision sensor

## SENSOR DESCRIPTION



The CMV2000 is a high sensitivity, pipelined global shutter CMOS image sensor with 2048 x 1088 pixel resolution capable of HD format. Pipelining allows

exposure during read out. The state-of-the-art pixel architecture offers true correlated double sampling (CDS) in global shutter mode, reducing the fixed pattern noise and dark noise significantly. The imager integrates 16 LVDS channels each running at 480 Mbps resulting in a 340 fps frame rate at full resolution at 10 bit per pixel. Driving and read-out are programmed over a serial peripheral interface. An internal timing generator produces the signals needed for read-out and exposure control of the image sensor. External exposure triggering remains possible. A 12 bit per pixel mode is available at reduced frame rate.

## SENSOR FEATURES

- Pipelined global shutter with CDS
- Optical format of 2/3"
- 2048 \* 1088 active pixels on a 5.5  $\mu\text{m}$  pitch
- 340 Frames/s in 10 bit mode
- 70 Frames/s in 12 bit mode
- Row windowing capable of up to 8 separate ROIs
- X-Y mirroring function
- 16 LVDS-outputs @ 480 MHz multiplexable to 8, 4 and 2 at reduced frame rate
- Multiple High Dynamic Range (HDR) modes up to 90 dB
- On chip temperature sensor
- On chip timing generation
- SPI-control
- Ceramic 95 pin  $\mu\text{PGA}$  package (18.6 mm x 13.5 mm)

## APPLICATION FIELDS

- Machine vision
- Motion control
- Traffic monitoring
- High speed inspection
- Security
- HD camcorders
- Automotive
- Barcode reading



# CMV2000

## High speed global shutter machine vision sensor

### SENSOR SPECIFICATIONS

Specification	Value
Resolution	2048 (h) x 1088 (v)
Pixel size	5.5 x 5.5 $\mu\text{m}^2$
Full well charge	13.5 Ke-
Conversion gain	0.075 LSB/e- (10 bit mode)
Sensitivity	4.64 V/lux.s (with micro lenses)
Temporal noise	13 e- (RMS)
Dynamic range	60 dB
Optical format	2/3"
Parasitic light sensitivity	<1/50 000
Dark current	125 e/s (25C die temperature)
Operating temperature range	-30 °C to +70 °C
Power consumption	600 mW
Fixed pattern noise	<1 LSB (<0.1% of full swing)

### ORDERING INFORMATION

Product number	Description
CMV2000-2E5M0PP	Monochrome version without micro lenses
CMV2000-2E5M1PP	Monochrome version with micro lenses
CMV2000-2E5C1PP	RGB Bayer color version with micro lenses

