

MML1-HR65DVI-5M / HR65VI-5M

SCHOTT MORITEX Reference
Data do not guarantee the performance of the product

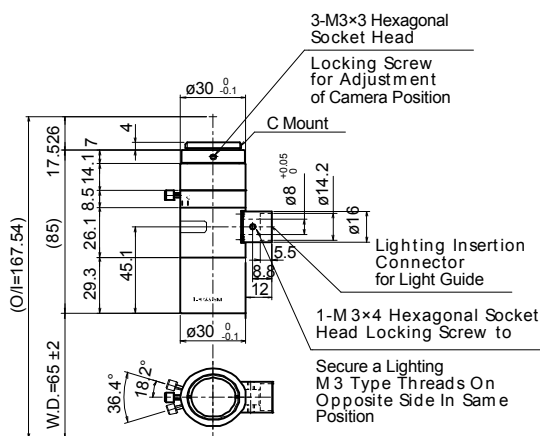
MML-High Resolution 5M

Drawing No. A04203/A04204

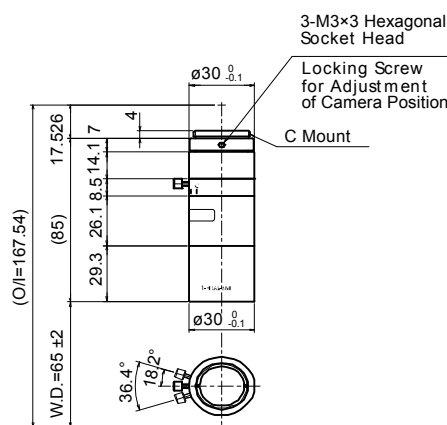


レンズ形式	Lens Type	Fixed Magnification Object Side Telecentric Lens
光学倍率	Magnification	1.00
焦点距離 (mm)	Focal Length	78.60
有効Fno	Effective Fno	7.00~28.00
NA	Numerical Aperture	0.071~0.018
WD/OD (mm)	Working/Object Distance	65.0/67.0
O/I (mm)	Object to Image Distance	167.54
鏡筒長 (mm)	Mechanical Tube Length	85.00
レンズバック (mm)	Lens Back	28.42
被写界深度 (mm)	DOF @PCoC ϕ 0.04mm	0.560~2.200
分解能 (μ m)	Resolution @ $\lambda=550$ nm	4.7~19.0
前側/後側主点位置 (mm)	Front/Rear Principal Position	90.16/-128.81
入射/出射瞳位置 (mm)	Entrance/Exit Pupil Position	1,880.98/-53.52
入射/出射瞳径 (mm)	Entrance/Exit Pupil Diameter	278.66/11.72
テレセントリシティー (deg.)	Telecentricity	0.085(1/3Inch) 0.111(1/2Inch) 0.123(1/1.8Inch) 0.144(2/3Inch)
光学ディストーション (%)	Optical Distortion	0.027(1/3Inch) 0.035(1/2Inch) 0.035(1/1.8Inch) 0.035(2/3Inch)
周辺光量比 (%)	Relative Illumination	99.72(1/3Inch) 99.58(1/2Inch) 99.53(1/1.8Inch) 99.55(2/3Inch)
質量 (g)	Weight	140.0/135.0
マウント	Mount	C Mount
イメージサークル径 (mm)	Image Circle	ϕ 11
最大適合カメラ	Largest Compatible Camera	2/3 Inch

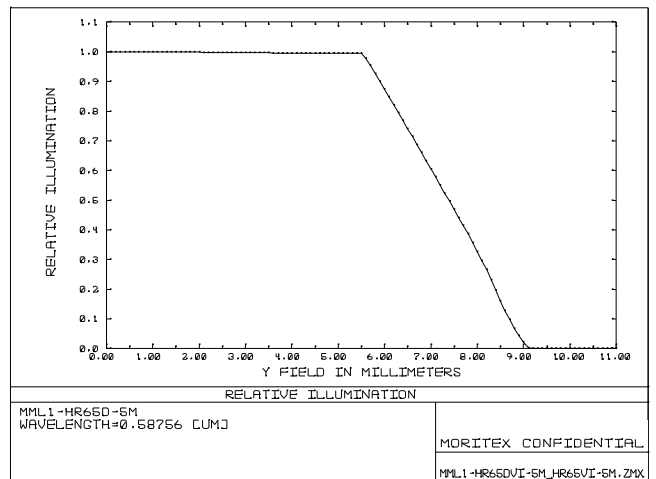
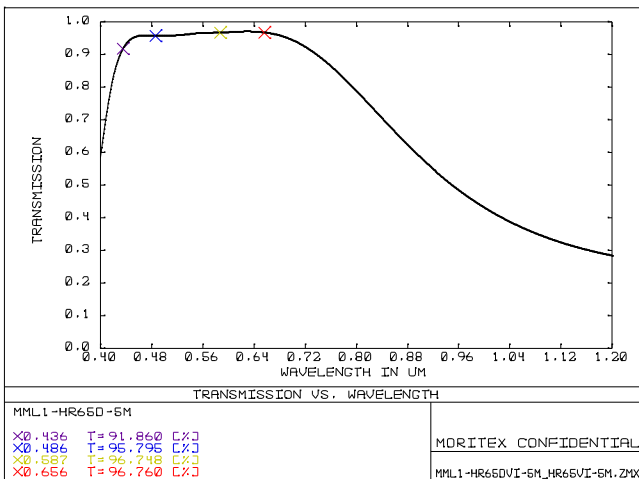
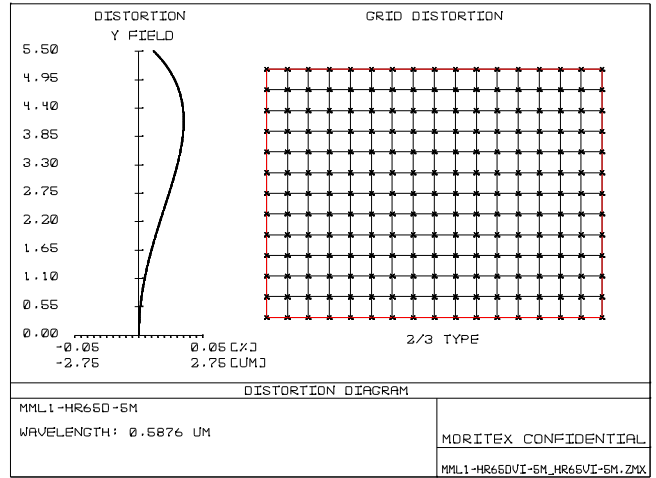
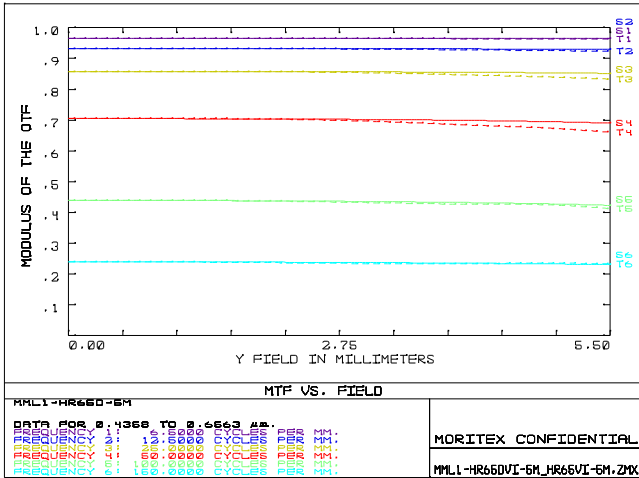
MML1-HR65DVI-5M



MML1-HR65VI-5M



SCHOTT MORITEX Reference
Data do not guarantee the performance of the product



内容は、通知なしに随時変更されることがあります。

The content is subject to change at any time without notification.